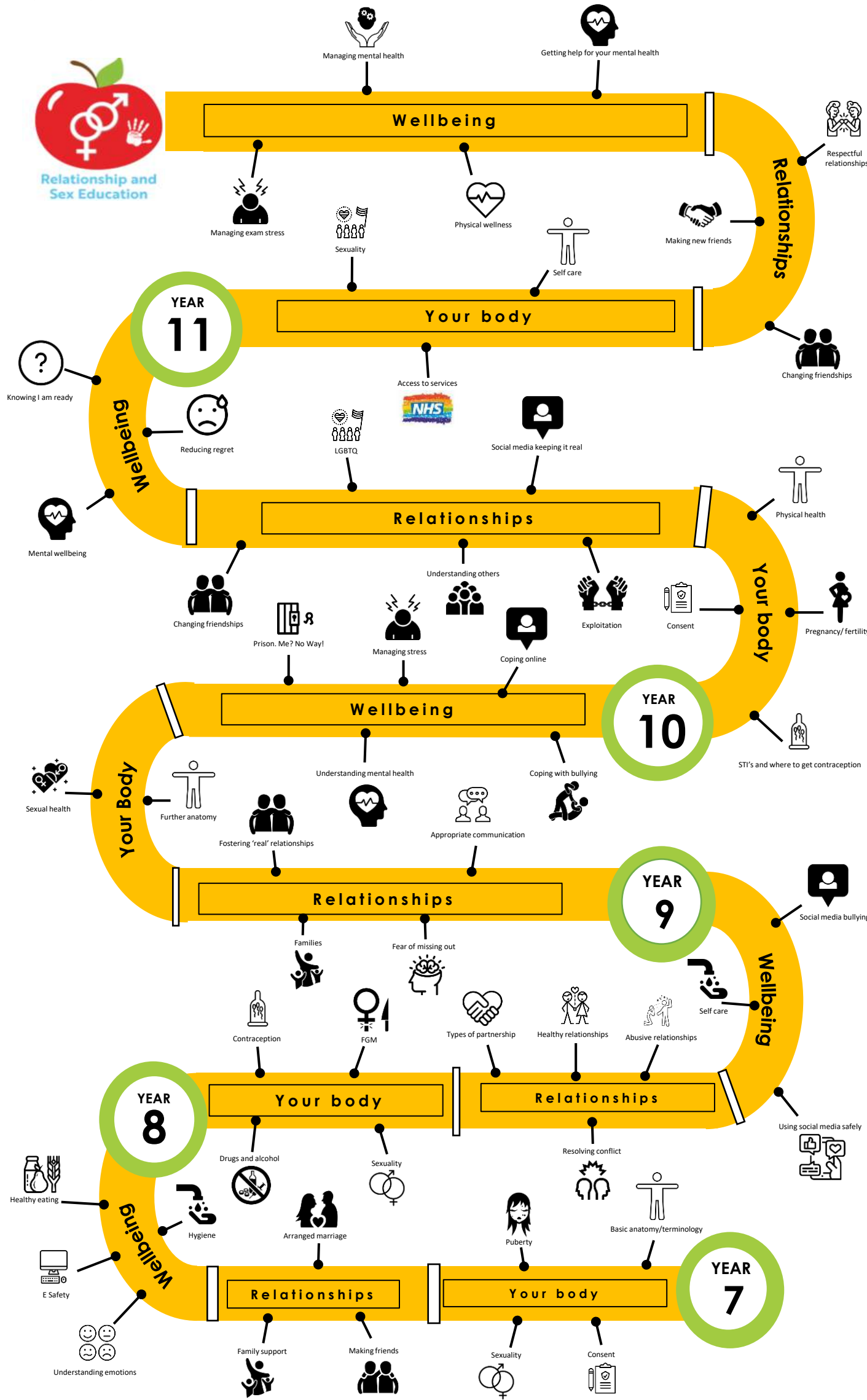


# Relationship and Sex Education Learning Journey

**Curriculum intent:** The RSE curriculum is designed to ensure all students are well informed and empowered to make the right choices in their relationships. The curriculum covers all aspects of relationship education from wellbeing, to families and friendships to sex. The curriculum is delivered through specific SMSC sessions, challenge days and additional sessions with specialist practitioners.



Much more than just a school