

# GCSE History

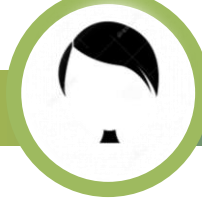
**YEAR 10**

**Weimar Germany, 1918-1933**



*Why did the Weimar Republic fail?*

**Nazi Germany, 1933-39**



*How did Hitler establish a dictatorship and control the German people?*

**Elizabeth – Threats at Home and Abroad, 1558-1588**



*What were the challenges and triumphs of Elizabeth's early reign?*

**GCSE: Whitechapel, 1870 – 1900**



*What can historical sources reveal about crime in late-Victorian Whitechapel?*

**Crime & Punishment**

*How has Crime and Punishment changed, 1000-Present?*



**Year 11**

**Elizabeth: Society & Exploration, 1558-1588**



*What were the challenges and triumphs of Elizabeth's early reign?*

**Superpower Relations, 1941-1991**



*How did the Superpowers fight for supremacy, 1941-1991?*

**Revision**

